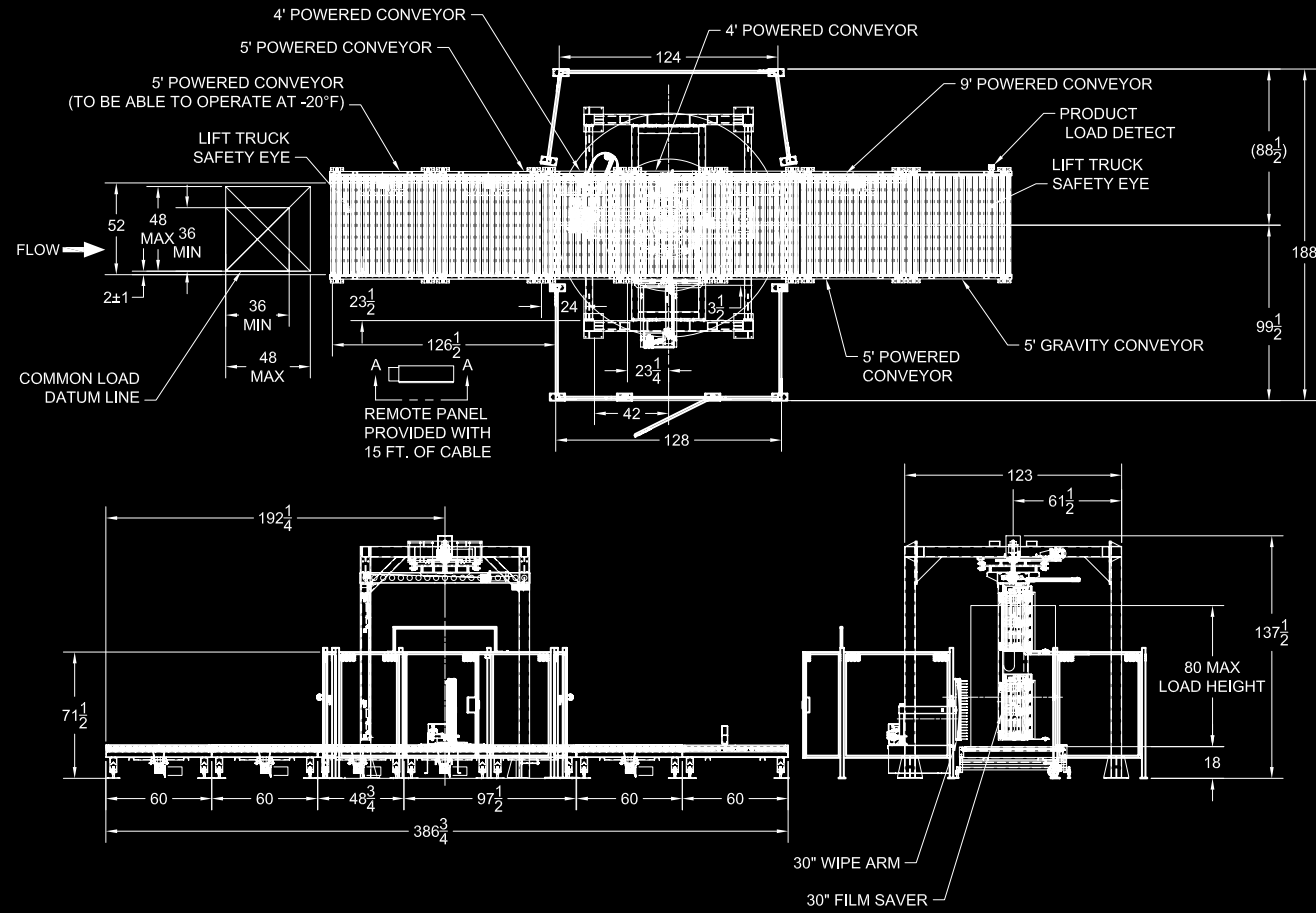


Final Layout May Vary
RTAC-4Q3-8 Shown



SPECIFICATIONS

Speed

- Can handle Up to 100 loads per hour

Power Requirements

- Electrical: 220V, 3Ph, 60Hz, 25A, 16.5kW
- Pneumatic: 80 psi, 5 CFM

Approx. Shipping Weight

- 4,860 lbs. w/conveyors

MODELS	Conv. Speed	Tower Speed	Min. Load Size	Standard Load Size	Max. Load Capacity
RTAC-15	35 FPM	15 RPM	30" x 30" x 30"	50" x 50" x 80"	4,000 lbs.
RTAC-18	35 FPM	18 RPM		optional 53" x 53" x 96"	4,000 lbs.
RTAC-24	35 FPM	24 RPM			4,000 lbs.

**Complete Aftermarket
Service & Support
for Your Packaging
Equipment**

SUPPORTPRO™

A DURAVANT SERVICE

Call **844.777.8776** for your regional tech

24/7 Help Available



ARPACSTRETCH™

RTAC SERIES

Rotary Tower Automatic Conveyorized Stretch Wrapper

ARPAC®

A DURAVANT COMPANY



THE DURAVANT FAMILY OF COMPANIES

www.duravant.com

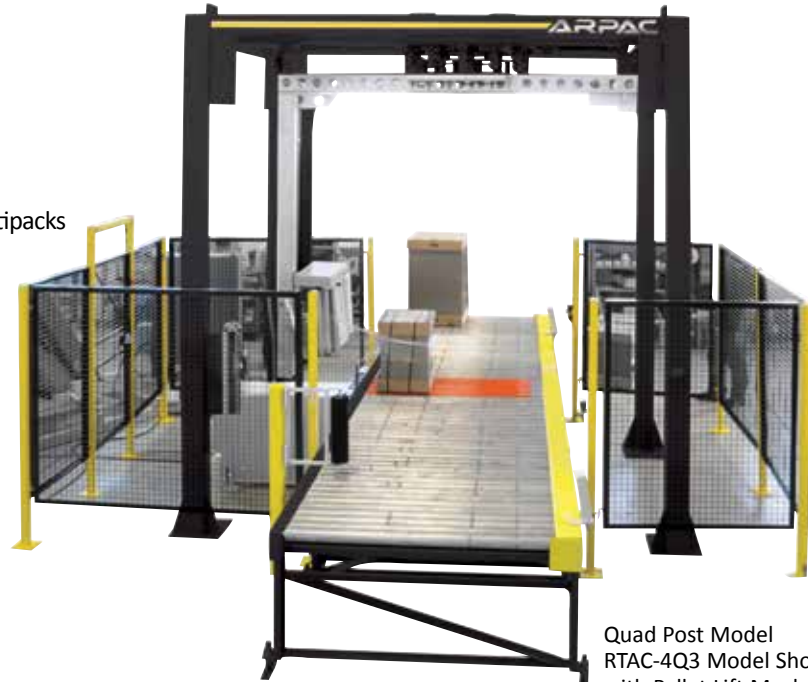
ARPAC | FISCHBEIN INTERNATIONAL | FMH CONVEYORS | HAMER-FISCHBEIN | KEY TECHNOLOGY | MARLEN INTERNATIONAL | MESPACK | OHLSON | QC INDUSTRIES

RTAC SERIES



APPLICATIONS:

- Boxes
- Coils
- Cans
- Rolls of Thread
- Crates
- Bricks
- Trayed Beverage Multipacks
- Cardboard



Quad Post Model
RTAC-4Q3 Model Shown
with Pallet Lift Mechanism

ARPAC's RTAC-SERIES heavy-duty conveyerized automatic rotary tower wrapping system offers superior performance around the clock. This system is ideal for high speed conveyerized production lines. It has a unique arm support & drive system that incorporates a precision steel ring for stable, safe, and maintenance-free machine operation.

To increase efficiency, the RTAC-SERIES indexes, automatically wraps, and discharges loads without operator assistance. A dual action cut and wipe arm provides clean cut and positive film tail attachment to the load.

In addition to these capabilities, the RTAC-SERIES can be manufactured with several performance enhancements. The optional Pallet Lift Mechanism is used to lift the load in the wrap zone allowing lower film wrap height from the bottom of the pallet. A Top Sheet Dispenser covers the top of the pallet with film to dust proof or weather proof the load.

THE RTAC-SERIES is manufactured in the USA in accordance with ARPAC's Lean Manufacturing Process (AM²) to ensure quality, performance and value.

MACHINE FEATURES

- Heavy-duty reinforced structural steel construction for around-the-clock operation
- Powder coat finish that provides a durable scratch resistant surface and prevents corrosion
- Touch screen Allen-Bradley® HMI for machine parameter settings, manual operations and fault diagnostics messages
- 3 wrap patterns including bypass mode
- Positive home position alignment
- Top over-wrap control
- Adjustable top and bottom wrap counters (0-7)
- Electronic film tension adjustment control
- Photo electric load height sensor that detects most dark colored loads
- Photo electric controls index, position and exit wrapped loads
- Safety photoeye and brake system on the fence and wrap zone immediately stops arm rotation in emergencies
- Safety flashing light informs that machine is in cycle
- Standard 6' high safety fencing and access door with inter lock switch for safe entry into wrapping area
- Variable carriage speed (0-30 FPM)
- EZ-LOAD FILM-SAVR Powered Pre-Stretch: up to 300% with minimum neck down
- Analog proximity switch dancer bar control for more reliable film feed speed control & corner compensation
- Automatic film clamp and cut with manual override control
- Film delivery system with 1/2 HP AC motor
- Carriage design allows film to grip pallet 3" to 4" from top of conveyer
- Anti-static rollers
- Corner compensation
- UL approved components
- Heavy duty conveyors with 2.5" rollers driven by "loop to loop" ANSI chain for more positive pallet handling

FEATURES & OPTIONS

FEATURES



EZ-LOAD FLM SAVR® with
"Swift Change" Film Mandrel



Precision Steel Ring Rotary
Arm Support Drive System



Clamp, Cut, Wipe Assembly

OPTIONS

- 30" film capacity available
- Tower extensions for 96" wrap height
- Variable speed conveyors
- Film usage monitoring
- Forktruck safety eye prevents conveyor section from running while loading or unloading
- Optional heat seal tail closure



Optional Ramps



Pallet Lift Mechanism in Wrap Zone
Provides Lower Wrap Heights



Wrap-N-Weigh® Feature Can Be
Integrated Into Conveyor



Roping Option With Special
Roping Sequences Available



Top Platen Feature Holds Unstable Pallet
Loads In Position During Wrapping Cycle



Optional Chain Conveyor



Top Sheet Dispenser Options For
Extra Weather Proofing



Optional Conveyor Heights, Forklift
Bumpers and Light Curtains



Remote Start Option